

Offshore Circuit Racing Drivers Association

Round 5 OCRDA National Series
21st - 23rd September 2018
Lowestoft

RACE INSTRUCTIONS



OCRDA, C/o South Hams Clutch Centre, Churchstow, Kingsbridge,
Devon TQ7 3QH
Office 01548 856154 Mobile 07970 728573
ocrda@btconnect.com

With special thanks to Associated British Ports
Royal Norfolk & Suffolk Yacht Club

Revision 6 – 3rd September 2018

1. EVENT APPROVAL

This event has been approved by OCRDA

2. RACE AND LICENCE STATUS

OCRDA – OCR Classes 1, 2, 3 & 4

Licences – OCRDA and other approved licences

3. COMPETITORS RESPONSIBILITY

Competitors must read the safety information at the back. By signing the race entry form and the official signing on form at the event all competitors are bound by the rules. It is the competitor's sole responsibility to decide whether or not to start or continue in a race once passed scrutineering. **All competitors must read and fully understand the rules relating to start procedures, overtaking rules, flag procedures and emergency assistance procedures.**

4. ORGANISING COMMITTEE AND RACE OFFICIALS

Event Organisation: (OCRDA)

Event Organising Committee: Bob McCarthy, Steve Oaten, Irene Sheffield

Race Officials

Race Manager	Steve Oaten	Scrutineers	Matt Humby,
Safety Control Officer	Guy Child		Dave Willcock
Race Compliance Officer	Eric Tuck		
Race Secretary	Irene Sheffield	Commentator	Peter Butler
Medical Officer	Jerry Pocknell	Media	David Sewell

5. Race Committee: The race committee consists of the Race Manager, Safety Control Officer, Chief Scrutineer, Chief Timekeeper and the Race Secretary.

6. Race Jury – (TBC)

7. RACE ADMINISTRATION AND REGISTRATION

On arrival at the race site, all crew members must report immediately to the Race Administration which is located at **The Royal Norfolk & Suffolk Yacht Club**

Race administration contact details during the event are: Irene Sheffield 07545 557969

All crew members must produce the documentation required under the Rules and sign the OCRDA indemnity forms. Crews not in possession of the correct paperwork will not be allowed to race.

8. PIT AREAS, PARKING & SPECIAL CONDITIONS.

Competitors are reminded that transfer of fuel is only permitted in the pit areas or launching areas under supervision with a fire extinguisher. Smoking is prohibited in the dry pits, wet pits, and the launching area. These rules must be adhered to at all times; offenders will be penalised.

Dry Pits Location: The Royal Norfolk & Suffolk Yacht Club

Wet Pits Location: The Royal Norfolk & Suffolk Yacht Club Marina

9. PRE-RACE SCRUTINEERING

Pre-race scrutineering will take place in accordance with Class specific rules.

10. LAUNCHING

Launching is the boat crew's responsibility and should not be undertaken before scrutineering, unless otherwise stated.

11. LAUNCHING ON THE SLIPWAY

Competitors are reminded to comply with all local regulations concerning the use of the slipway. Details of the marshalling area and procedures will be given at drivers briefing.

At no time are crew to be in the boat whilst going to and from the slipway or whilst the boat is being moved on the slipway.

12 TIMETABLES

Friday 21st September 2018		
Teams Arrive	09:00	17:00
Race Administration Open	14:00	17:00
Signing In	14:00	18:00
Scrutineering	14:00	18:00
Social TBC	19:00	
Saturday 22nd September 2018		
Race Administration Open	07:30	16:00
Signing In	07:30	09:30
Scrutineering	07:30	09:00
Drivers & Safety Briefing	10:00	10:30
Launching	08:00	11:00
Course Familiarisation	11:15	11:30
Race 1 25 Min + Lap	11:30	12:00
Race 2 25 Min + Lap	12:30	13:15
Social The Royal Norfolk & Suffolk Yacht Club	20:00	MIDNIGHT
Sunday 23rd September 2018		
Race Administration Open	08:30	16:00
Scrutineering	08:30	10:00
Drivers & Safety Briefing	10:00	10:30
Launching	09:00	11:30
Race 3 25 mins + Lap	12:00	12:45
Race 4 25 mins + Lap	13:15	14:00
Prize Giving	16:00	16:30
Tide Times	High	Low
Saturday 22nd September 2018	08:20 (2.20m)	14:40 (0.08m)
Sunday 23rd September 2018	09:00 (2.30)	15:20 (0.06m)
NOTE:- ALL Heats WILL finish on time.		

13. OFFICIAL PRACTICE ARRANGEMENTS

It is a requirement for crews to complete a minimum number of laps of the race circuit prior to racing. Full details will be given at Drivers Briefing.

14. MANDATORY DRIVERS BRIEFING

Mandatory Drivers Briefing will take place at **The Royal Norfolk & Suffolk Yacht Club**

Signing-in will commence 15 minutes before the Briefing. All crew for each race boat must sign in to the briefing by the start time and attend the entire briefing. A Roll Call may be held. Penalty for absence may be disqualification from starting the race or other penalties as defined in Class Rules or by the race organisers. Breathalyser and/or Drug tests may be given. The start of drivers briefing marks the end of the eligibility protest period .

15. NOISE AND SPEED RESTRICTIONS

Competitors must obey all local regulations and Bye Laws relating to excessive speed and noise. All competitors are requested to refrain from starting their engines unless absolutely necessary before proceeding to the race or official practice sessions. Failure to observe local regulations will result in penalties being applied.

16. START PROCEDURE

This race will use a Standing and / or Rolling start. Full details of the starting procedure will be given at Drivers Briefing. A chequered flag will be flown in the muster area immediate prior to the yellow flag be deployed as a reminder **TO ACTIVATE YOUR TRACKING DEVICE**

17. WET DRIVER RULE

A REMINER that If any crew member lands completely in the water (man overboard) the race will be stopped immediately in the same manner as a Red Flag and Red Flags will be flown.

18. FLAG SIGNALS

All flag signals are fully described in the General Racing Rules. All Competitors must have a full understanding of all flag signals. If a competitor fails to acknowledge 2 flags in any one race they will immediately be disqualified.

19. Penalties

Penalties will be decided and applied by the lead officials relative to the nature of any infringement of the rules or bad behaviour.

20. Refuelling

Due to issues on safety and competitiveness and with immediate effect there will no longer be any refuelling between races on the same day. You must ensure that your tank has sufficient capacity to complete the days racing as specified in Race instructions allowing for any delays and restarts"

This rule has now been added to the rule book to be ratified at the 2019 AGM.

21. COURSE DETAILS

The schematic drawing of the course in these Race Instructions is provided for competitors' assistance and should not to be used as a chart for navigational purposes.

Course Marks

A full description of each course mark will be given at drivers' briefing, including the start run and any Exclusion Zones.

Muster Area

S.W. of Mark 5

Start Run

From Muster to Mark 1.

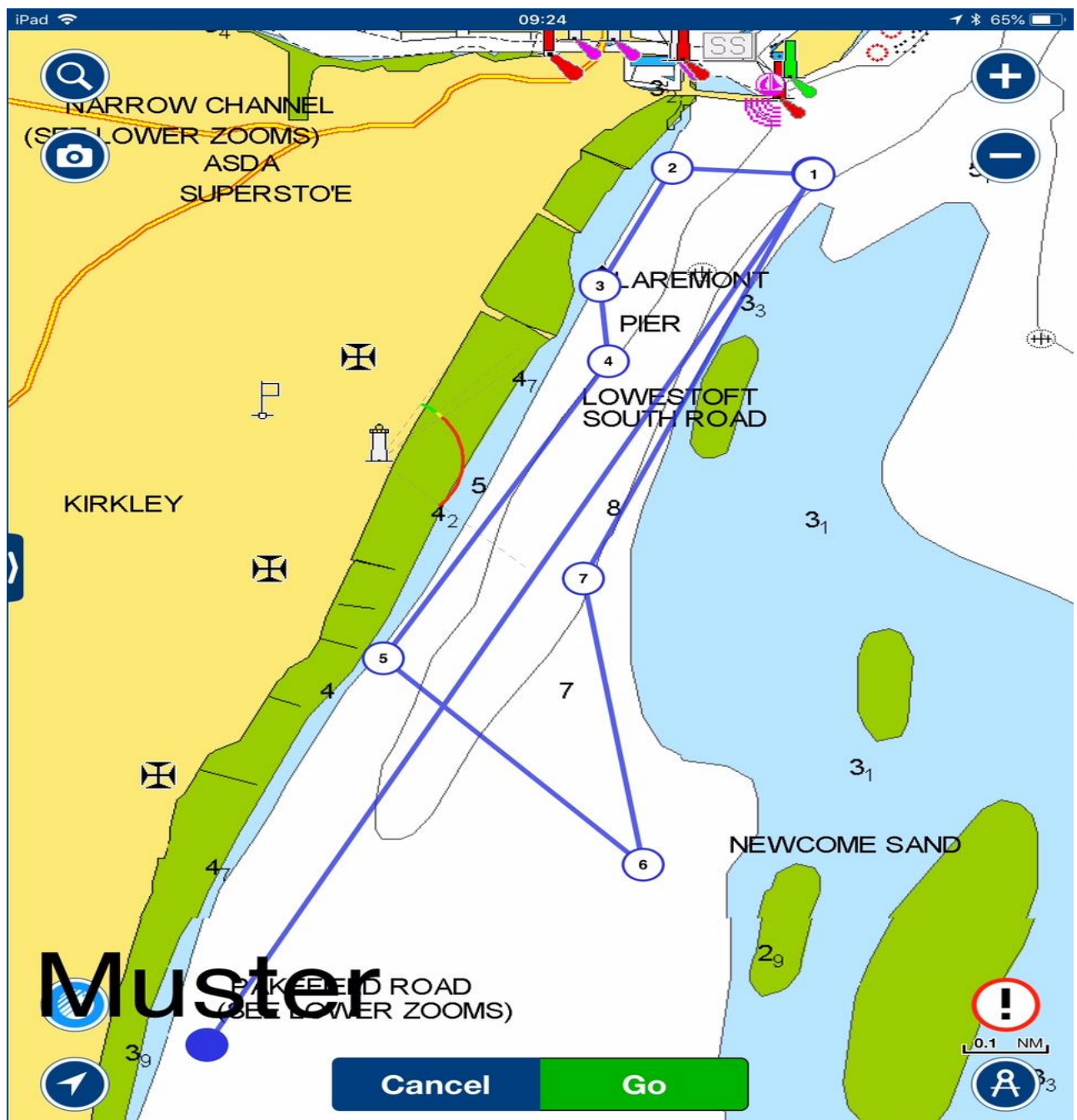
Lap/Finish Line

A Transit line from the time keepers to a position approximately 75 meters after Mark 2.

APPROXIMATE MARKS OF THE COURSE

1	52.28.14	1.45.38	Orange Laid Mark	Port
2	52.28.20	1.45.11	Orange Laid Mark	Port
3	52.27.98	1.44.95	Orange Laid Mark	Port
4	52.27.88	1.44.99	Orange Laid Mark	Starboard
5	52.27.38	1.44.59	Orange Laid Mark	Port
6	52.27.08	1.45.06	Orange Laid Mark	Port
7	52.27.46	1.44.91	Orange Laid Mark	Starboard
			Total Lap Distance	2.6nm

Course Schematic (indicative only)



22. POST-RACE DECLARATION

The **Driver and Co-Driver** must sign off at race administration in accordance with Class specific rules. Failure to do so may result in exclusion from the results. **All** Crew Members must sign off at race administration before the end of the event and to collect their race documentation.

23. PRIZE GIVING

The prize giving will take place at The Royal Norfolk & Suffolk Yacht Club in accordance with the timetable. Dress code for prize giving: Casual - Trophies will be awarded in each class subject to the amount of boats and in line with the OCRDA Rules and the awarding of trophies to the National Champions in each class.

24. RULES AND REGULATIONS

The race/s will be run under current rules together with these Race Instructions and any other instructions issued before or at Drivers' Briefings or in Race Bulletins. The Organisers reserve the right to change these Instructions at any time for safety reasons, provided that any change will be in accordance with the current rules. Any changes will be notified to competitors in a Race Bulletin and, if possible, announced at Drivers' Briefing. Any infringement of the Rules or of the Race Instructions, or instructions issued at Drivers' Briefings or in race Bulletins may lead to disqualification or other penalties being applied by the organising club. Organisers have the right to refuse any boat which they consider unsuitable and/or which does not conform to the requirements of the present Rules.

The Organisers may cancel or postpone the event or a race at any time in the event of bad weather, equipment failure or otherwise. The entry fee is not refundable.

25. SPECIAL INSTRUCTIONS

Entry & Exit of the Harbour will be strictly under the control of the Race Manager / Safety Control Officer in conjunction with ABP / Harbour control.

Other than in an emergency, relevant permission must be obtained from ABP / Harbour control along with a green light before entering the harbour.

There is to be no refuelling or spillage of any kind on the Royal Green, please be sure to arrive fully fuelled for Saturday racing and follow arrangements detailed at Saturday's briefing for re-fuelling on Sunday.

SAFETY INFORMATION

Safety takes priority over racing at all times

All race boats MUST observe the International Rules for the Prevention of Collisions at Sea (IRPCS) at all times.

- a) Swimmers, board sailors, private and commercial craft of all types may be encountered. Competitors are reminded to keep a sharp look-out at all times and to take the necessary action in accordance with the IRPCS rules.
- b) Competitors are also reminded to keep a sharp look-out at all times for any marine wildlife that may be encountered in the vicinity of the race course and take the necessary avoiding action.
- c) Competitors are warned to remember their speed and the fact that other craft may not be fully aware or able to keep clear.
- d) Competitors are asked to bear in mind that official patrol and rescue boats have no power to insist that any craft or swimmer should keep clear of the course of the race. Advice can only be given for the safety of other craft and swimmers.
- e) International Code Flag 'A' denotes DIVERS. Competitors must give a wide clearance of at least 100 metres.
- f) The course will be patrolled by official patrol and rescue boats with (If necessary) official observer boats in the vicinity of certain race marks; other race marks may be observed from the shore.